



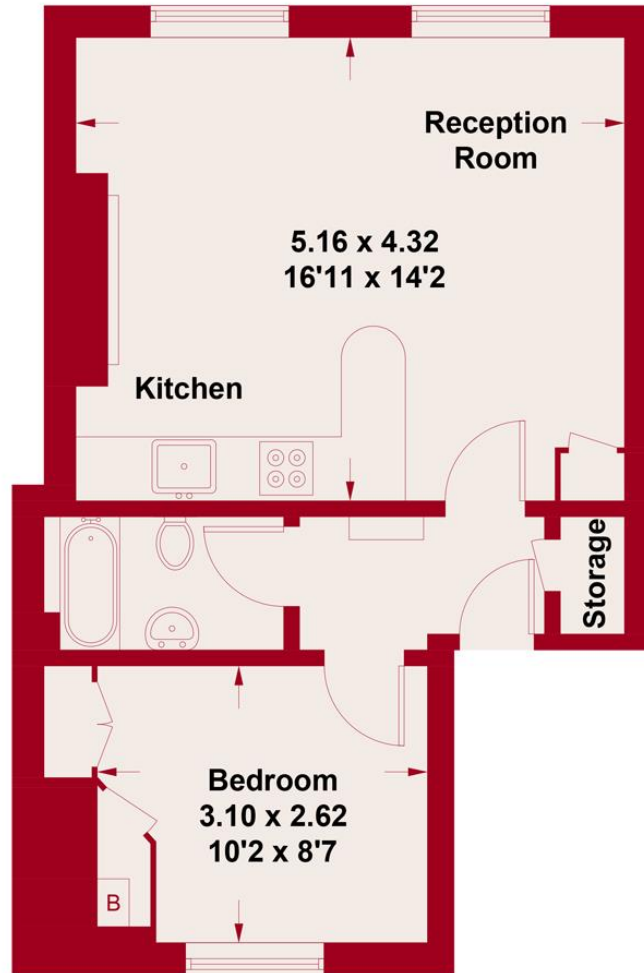
**Kildare Terrace,
Bayswater W2**
£600,000
Shared Freehold

A bright and spacious flat for sale occupying an entire floor of a period conversion on this leafy and tranquil cul-de-sac, moments from the shops and restaurants of Westbourne Grove.

- 1 Bedroom
- 1 Reception room
- Modern fitted kitchen
- Bathroom
- Attractive views
- Share of freehold
- Moments from shops
- Energy rating tbc

Kildare Terrace, Bayswater, London, W2

Kildare Terrace is well placed to benefit from this vibrant area's many excellent amenities and train and underground stations. Portobello Road and Notting Hill are within easy reach, as are the wide open spaces of Kensington Gardens and Hyde Park.



Second Floor



Kildare Terrace
Approximate Gross Internal Area = 38.8 sq m / 418 sq ft

Illustration for Identification Purpose Only. Not to Scale.

| | |
|-----------|---|
| Tenure | Shared Freehold |
| Price | £600,000 |
| Viewing | Strictly by appointment with Kinleigh Folkard & Hayward Bayswater office Telephone 020 7724 1222 |
| Reference | 2180820 |

Whilst every effort is made to ensure the accuracy of these details, it should be noted that the above measurements are approximate only. Floorplans are for representation purposes only and prepared according to the RICS Code of Measuring Practice by our floorplan provider. Therefore, the layout of doors, windows and rooms are approximate and should be regarded as such by any prospective purchaser. Any internal photographs are intended as a guide only and it should not be assumed that any of the furniture/fittings are included in any sale. Where shown, details of lease, ground rent and service charge are provided by the vendor and their accuracy cannot be guaranteed, as the information may not have been verified and further checks should be made either through your solicitor/conveyance. Where appliances, including central heating, are mentioned, it cannot be assumed that they are in working order, as they have not been tested. Please also note that wiring, plumbing and drains have not been checked.