



Holland Park, Holland Park, W11

Kinleigh Folkard & Hayward







Holland Park, Holland Park, W11 £2,800,000 Leasehold

Exceptionally well located only moments from Holland Park Avenue with its array of boutique shops and Central Line transport links. Private balconies and a large, landscaped communal garden.

- Three double bedrooms
- Two bathrooms
- Second Floor
- Bright
- Newly refurbished
- Sought after address
- Great transport links
- EPC-rating-E

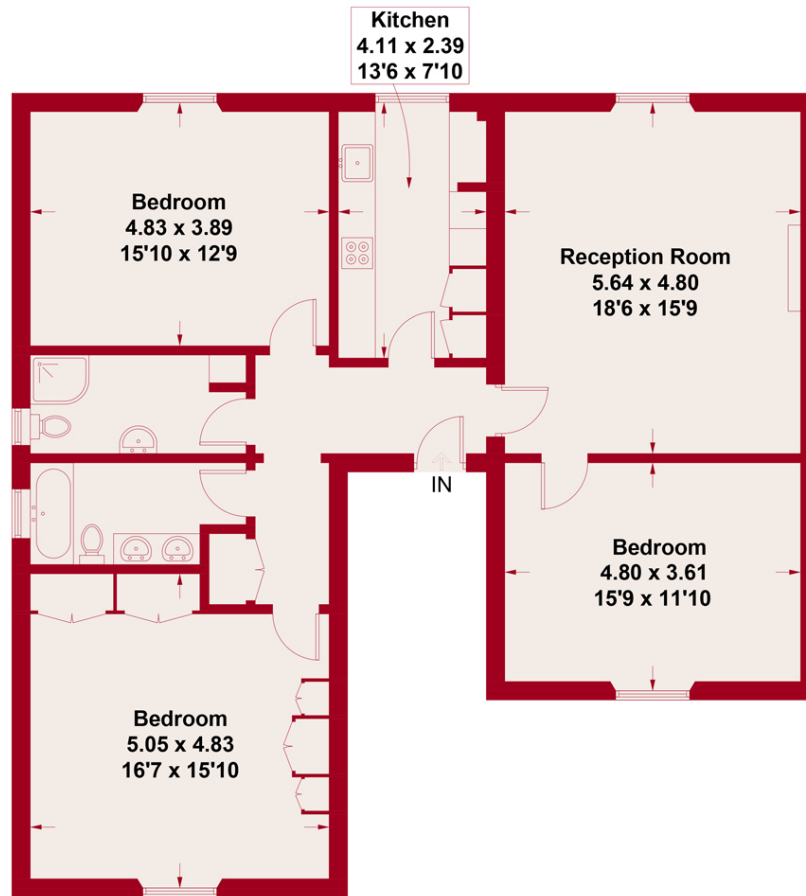
A newly refurbished three bedroom apartment set on the second floor of a beautiful Grade II listed white stucco double fronted Italianate villa in Holland Park.

For more information or to arrange a viewing please contact:

Holland Park
128 Holland Park Avenue
Holland Park, W11 4UE
0203 542 2111
hollandpark.sales@kfh.co.uk

Kinleigh Folkard & Hayward





Second Floor



Holland Park
Approximate Gross Internal Area = 121.7 sq m / 1310 sq ft

Illustration for Identification Purpose Only. Not to Scale.

These particulars are believed to be correct but their accuracy is not guaranteed and they do not form part of any contract. Whilst every effort is made to ensure the accuracy of these details, it should be noted that the above measurements are approximate only. Floorplans are for representation purposes only and prepared according to the RICS Code of Measuring Practice by our floorplan provider. Therefore, the layout of doors, windows and rooms are approximate should be regarded as such by any prospective purchaser. Any internal photographs are intended as a guide only and it should not be assumed that any of the furniture/fittings are included in any sale. Where shown, details of lease, ground rent and service charge are provided by the vendor and their accuracy cannot be guaranteed, as the information may not have been verified and further checks should be made either through your solicitor/conveyancer or by referring to the home information pack for this property. Where appliances, including central heating, are mentioned, it cannot be assumed that they are in working order, as they have not been tested. Please also note that wiring, plumbing and drains have not been checked.

