



Redcliffe Street, Chelsea, SW10

Kinleigh Folkard & Hayward







**Redcliffe Street,
Chelsea, SW10**
£950,000
Shared Freehold

The apartment features two double bedrooms which are peacefully situated overlooking gardens. Highlights include air conditioning, a gas fireplace, a half landing for a dining table/office space and a walk in wardrobe off the master bedroom.

- Two bedrooms
- Share of Freehold
- No chain
- Roof terrace potential
- Chelsea location
- Split level
- Close to amenities
- EPC rating E

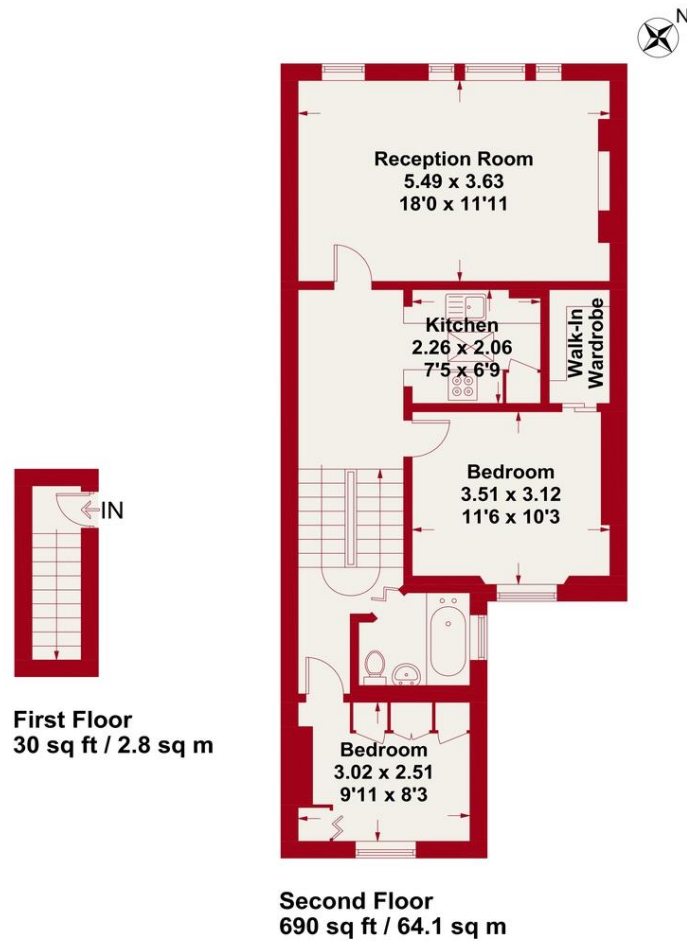
A split level Victorian apartment flooded with natural light in an enviable Chelsea location with Fulham Road, Earls Court and West Brompton nearby.

For more information or to arrange a viewing please contact:

Earls Court
243 Old Brompton Road
Kensington, SW5 9HP
020 7740 2020
earlscourt.sales@kfh.co.uk

Kinleigh Folkard & Hayward





kfh.co.uk Redcliffe Street
 Approximate Gross Internal Area = 66.9 sqm / 720 sq ft
 Illustration for Identification Purpose Only. Not to Scale.

These particulars are believed to be correct but their accuracy is not guaranteed and they do not form part of any contract. Whilst every effort is made to ensure the accuracy of these details, it should be noted that the above measurements are approximate only. Floorplans are for representation purposes only and prepared according to the RICS Code of Measuring Practice by our floorplan provider. Therefore, the layout of doors, windows and rooms are approximate should be regarded as such by any prospective purchaser. Any internal photographs are intended as a guide only and it should not be assumed that any of the furniture/fittings are included in any sale. Where shown, details of lease, ground rent and service charge are provided by the vendor and their accuracy cannot be guaranteed, as the information may not have been verified and further checks should be made either through your solicitor/conveyancer or by referring to the home information pack for this property. Where appliances, including central heating, are mentioned, it cannot be assumed that they are in working order, as they have not been tested. Please also note that wiring, plumbing and drains have not been checked.

