



Askew Crescent, Shepherds Bush, W12

Kinleigh Folkard & Hayward







**Askew Crescent,
Shepherds Bush, W12**
£400,000
Leasehold

This one bedroom apartment is ideal for first time buyers or investors alike.

- One Double Bedroom
- Raised Ground Floor
- 115 Year Lease
- No Onward Chain
- Immaculate Condition
- Sought After Location
- EPC Rating C

Situated on the sought after Askew Crescent, stands this impressive raised ground floor apartment. Presented in an excellent condition and offered to the market with no onward chain.

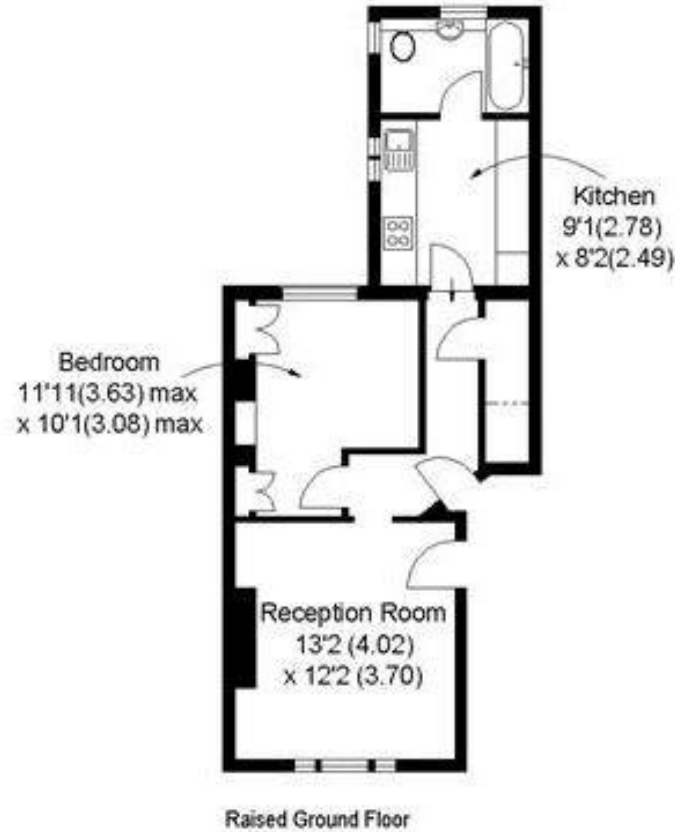
For more information or to arrange a viewing please contact:

Hammersmith
180 King Street
Hammersmith, W6 0RA
020 8563 9633
hammersmith.sales@kfh.co.uk

Kinleigh Folkard & Hayward

Bushells 2010
© Myra Floorplans

Approximate Gross Internal Area
474 sqft / 44 sqm



These particulars are believed to be correct but their accuracy is not guaranteed and they do not form part of any contract. Whilst every effort is made to ensure the accuracy of these details, it should be noted that the above measurements are approximate only. Floorplans are for representation purposes only and prepared according to the RICS Code of Measuring Practice by our floorplan provider. Therefore, the layout of doors, windows and rooms are approximate should be regarded as such by any prospective purchaser. Any internal photographs are intended as a guide only and it should not be assumed that any of the furniture/fitings are included in any sale. Where shown, details of lease, ground rent and service charge are provided by the vendor and their accuracy cannot be guaranteed, as the information may not have been verified and further checks should be made either through your solicitor/conveyancer or by referring to the home information pack for this property. Where appliances, including central heating, are mentioned, it cannot be assumed that they are in working order, as they have not been tested. Please also note that wiring, plumbing and drains have not been checked.

