



Royal Mint Street, Tower Hill, E1

Kinleigh Folkard & Hayward







**Royal Mint Street,
Tower Hill, E1**
£620,000
Leasehold

This spacious property is newly finished and presented in immaculate condition. Features a large reception, generous bedroom with balcony and a high-spec finish throughout.

Stylish modern living in a quiet and ideally located development near Tower Hill.

- Large double bedroom
- Spacious reception
- High-spec kitchen
- Private balcony
- Concierge
- Communal gym
- Swimming pool
- EPC rating B

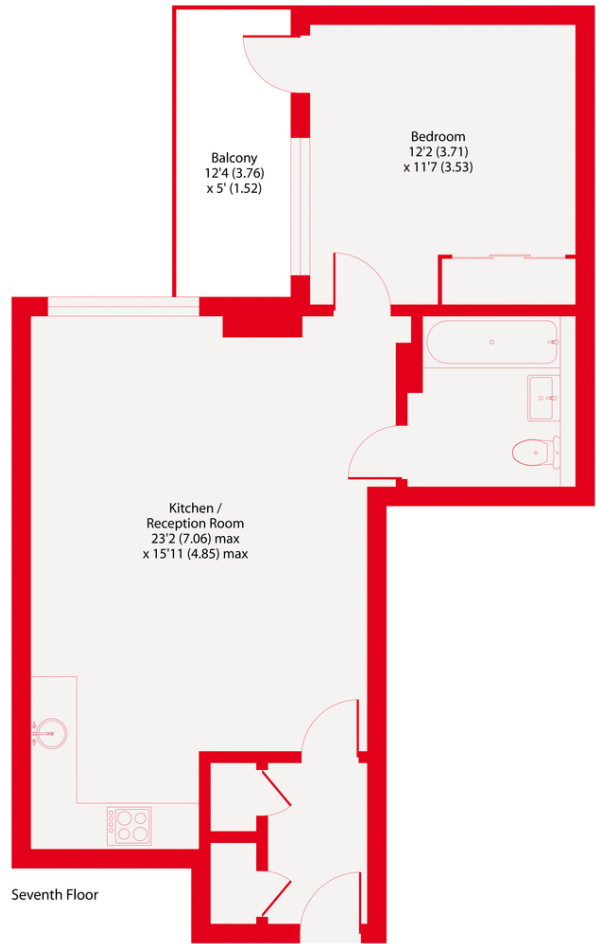
A sleek and stylish one bedroom flat within the desirable Royal Mint Gardens development, just 300m from the Tower Of London and Tower Bridge. Offers stylish communal gym and swimming pool.

For more information or to arrange a viewing please contact:

Clerkenwell
132-136 St John Street
Clerkenwell, EC1V 4JT
020 7563 5060
clerkenwell.sales@kfh.co.uk

Kinleigh Folkard & Hayward





Royal Mint Street, E1
 Approximate Area = 576 sq ft / 54 sq m
 For identification only - Not to scale

Kinleigh Folkard & Hayward



Floor plan produced in accordance with RICS Property Measurement Standards incorporating International Property Measurement Standards (IPMS2 Residential). © ncheccom 2021. Produced for Kinleigh Folkard & Hayward. REF: 761916

These particulars are believed to be correct but their accuracy is not guaranteed and they do not form part of any contract. Whilst every effort is made to ensure the accuracy of these details, it should be noted that the above measurements are approximate only. Floorplans are for representation purposes only and prepared according to the RICS Code of Measuring Practice by our floorplan provider. Therefore, the layout of doors, windows and rooms are approximate should be regarded as such by any prospective purchaser. Any internal photographs are intended as a guide only and it should not be assumed that any of the furniture/fittings are included in any sale. Where shown, details of lease, ground rent and service charge are provided by the vendor and their accuracy cannot be guaranteed, as the information may not have been verified and further checks should be made either through your solicitor/conveyancer or by referring to the home information pack for this property. Where appliances, including central heating, are mentioned, it cannot be assumed that they are in working order, as they have not been tested. Please also note that wiring, plumbing and drains have not been checked.

