



**Brondesbury Villas, Queens Park, NW6**

Kinleigh Folkard & Hayward







## Brondesbury Villas, Queens Park, NW6 £500,000 Shared Freehold

Brondesbury Villas is a quiet, residential street ideally positioned close to the amenities of Salusbury Road and the green open spaces of Queen's Park. There are excellent transport links close by including Queens Park Station, as well as many bus routes.

- One double bedroom
- Second floor flat
- Period conversion
- Share of freehold
- Quiet tree-lined street
- Excellent transport links
- Chain free

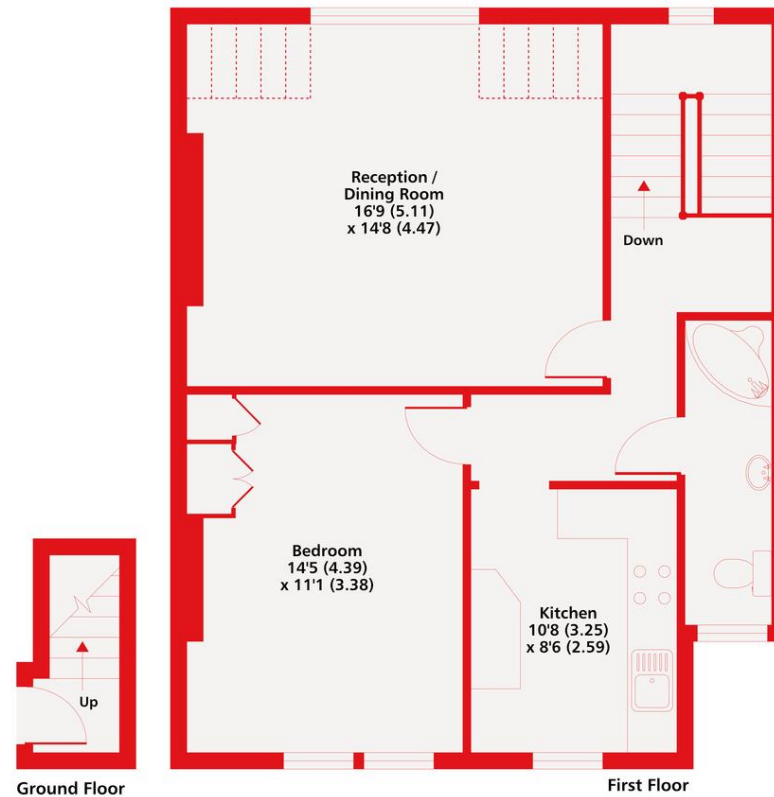
A bright and spacious one double bedroom top floor flat, forming part of an imposing period building moments from local amenities.

For more information or to arrange a viewing please contact:

**Queens Park**  
49 Salusbury Road  
Queens Park, NW6 6NL  
020 3962 3050  
queenspark.sales@kfh.co.uk

Kinleigh Folkard & Hayward

Denotes restricted head height



Brondesbury Villas NW6  
Approximate Area = 702 sq ft / 65.2 sq m  
For identification only - Not to scale

Kinleigh Folkard & Hayward



Floor plan produced in accordance with RICS Property Measurement Standards incorporating International Property Measurement Standards (IPMS2 Residential). © nichecom 2021. Produced for Kinleigh Folkard & Hayward. REF: 761597

These particulars are believed to be correct but their accuracy is not guaranteed and they do not form part of any contract. Whilst every effort is made to ensure the accuracy of these details, it should be noted that the above measurements are approximate only. Floorplans are for representation purposes only and prepared according to the RICS Code of Measuring Practice by our floorplan provider. Therefore, the layout of doors, windows and rooms are approximate should be regarded as such by any prospective purchaser. Any internal photographs are intended as a guide only and it should not be assumed that any of the furniture/fittings are included in any sale. Where shown, details of lease, ground rent and service charge are provided by the vendor and their accuracy cannot be guaranteed, as the information may not have been verified and further checks should be made either through your solicitor/conveyancer or by referring to the home information pack for this property. Where appliances, including central heating, are mentioned, it cannot be assumed that they are in working order, as they have not been tested. Please also note that wiring, plumbing and drains have not been checked.

