



**Hamlet Gardens, Hammersmith, W6**

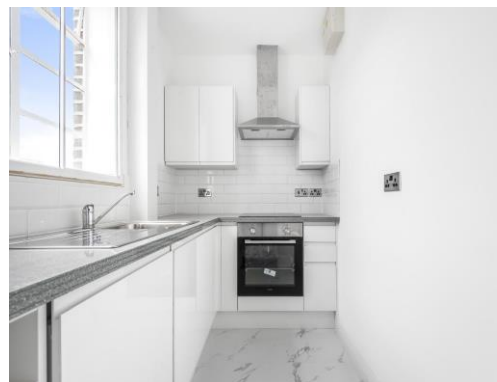
**Kinleigh Folkard & Hayward**











## Hamlet Gardens, Hammersmith, W6

OIEO

£325,000

Leasehold

This desirable property is set over the 9th floor of a fantastic art-deco block with concierge and offers great views and natural light.

There is clever use of space with built-in storage and well-proportioned rooms. Ideally located close to great amenities

- Large double bedroom
- Spacious reception
- Separate kitchen
- Stylish modern bathroom
- Refurbished throughout
- 9th floor with lifts
- Vacant, chain-free
- Tube & amenities nearby

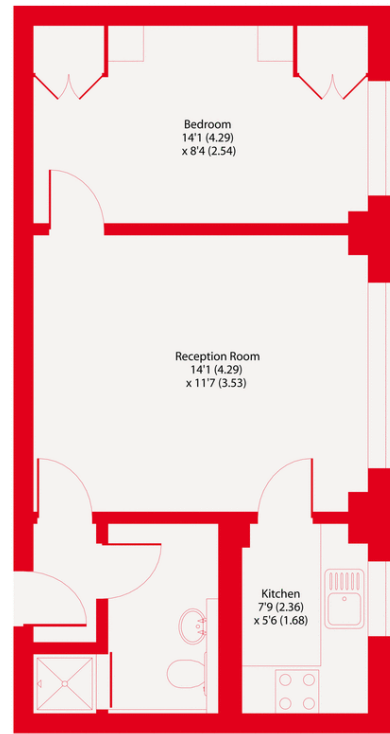
A very stylish, newly refurbished one bedroom flat within the popular Kings Court development, just moments from the Tube, Ravenscourt Park and King Street. Vacant, chain-free sale.

For more information or to arrange a viewing please contact:

**Hammersmith**  
180 King Street  
Hammersmith, W6 0RA  
020 8563 9633  
hammersmith.sales@kfh.co.uk

Kinleigh Folkard & Hayward





Ninth Floor

Hamlet Gardens, W6  
Approximate Area = 410 sq ft / 38 sq m  
For identification only - Not to scale

Kinleigh Folkard & Hayward



Floor plan produced in accordance with RICS Property Measurement Standards incorporating International Property Measurement Standards (IPMS2 Residential). © nchecon 2021. Produced for Kinleigh Folkard & Hayward. REF: 738988

These particulars are believed to be correct but their accuracy is not guaranteed and they do not form part of any contract. Whilst every effort is made to ensure the accuracy of these details, it should be noted that the above measurements are approximate only. Floorplans are for representation purposes only and prepared according to the RICS Code of Measuring Practice by our floorplan provider. Therefore, the layout of doors, windows and rooms are approximate should be regarded as such by any prospective purchaser. Any internal photographs are intended as a guide only and it should not be assumed that any of the furniture/fittings are included in any sale. Where shown, details of lease, ground rent and service charge are provided by the vendor and their accuracy cannot be guaranteed, as the information may not have been verified and further checks should be made either through your solicitor/conveyancer or by referring to the home information pack for this property. Where appliances, including central heating, are mentioned, it cannot be assumed that they are in working order, as they have not been tested. Please also note that wiring, plumbing and drains have not been checked.

