



Jerusalem Passage, Clerkenwell, EC1V

Kinleigh Folkard & Hayward







Jerusalem Passage, Clerkenwell, EC1V £520,000 Shared Freehold

This stylish property features a generous reception, separate modern kitchen and double bedroom with built-in storage.

This Share of Freehold flat is perfect for First Time Buyers or Buy To Let. Short walks to the City, central London or down to the river.

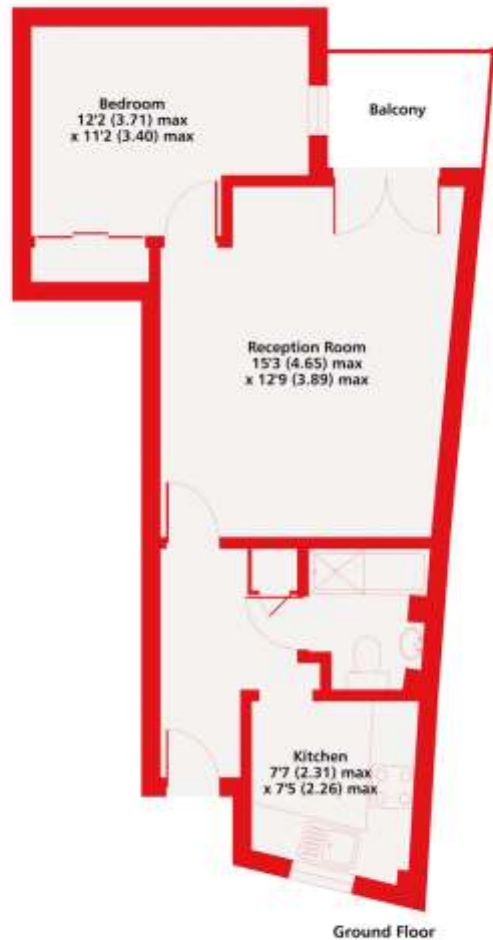
- Large double bedroom
- Spacious reception
- Separate kitchen
- Private balcony
- Ideal central location
- Vacant and chain free
- Smartly finished
- EPC rating E

A very charming one bedroom flat in the heart of Clerkenwell, near St John's Square, with great space and a private balcony off the reception. Vacant and finished to a high standard.

For more information or to arrange a viewing please contact:

Clerkenwell
132-136 St John Street
Clerkenwell, EC1V 4JT
020 7563 5060
clerkenwell.sales@kfh.co.uk

Kinleigh Folkard & Hayward



Jerusalem Passage, EC1
Approximate Area = 451 sq ft / 41.9 sq m
For identification only - Not to scale

Kinleigh Folkard & Hayward



This plan produced in accordance with RICS Property Measurement Standards incorporating International Property Measurement Standards (IPMS) Residential, 1st Edition, 2021. Produced for Kinleigh Folkard & Hayward, REF: 103442

These particulars are believed to be correct but their accuracy is not guaranteed and they do not form part of any contract. Whilst every effort is made to ensure the accuracy of these details, it should be noted that the above measurements are approximate only. Floorplans are for representation purposes only and prepared according to the RICS Code of Measuring Practice by our floorplan provider. Therefore, the layout of doors, windows and rooms are approximate should be regarded as such by any prospective purchaser. Any internal photographs are intended as a guide only and it should not be assumed that any of the furniture/fittings are included in any sale. Where shown, details of lease, ground rent and service charge are provided by the vendor and their accuracy cannot be guaranteed, as the information may not have been verified and further checks should be made either through your solicitor/conveyancer or by referring to the home information pack for this property. Where appliances, including central heating, are mentioned, it cannot be assumed that they are in working order, as they have not been tested. Please also note that wiring, plumbing and drains have not been checked.

